

# Building No.1



# Building No.1



# Building No.1



TYPE -A  
GROUND FLOOR PLAN

# Building No.1



TYPE -A  
1ST TO 7TH FLOOR PLAN

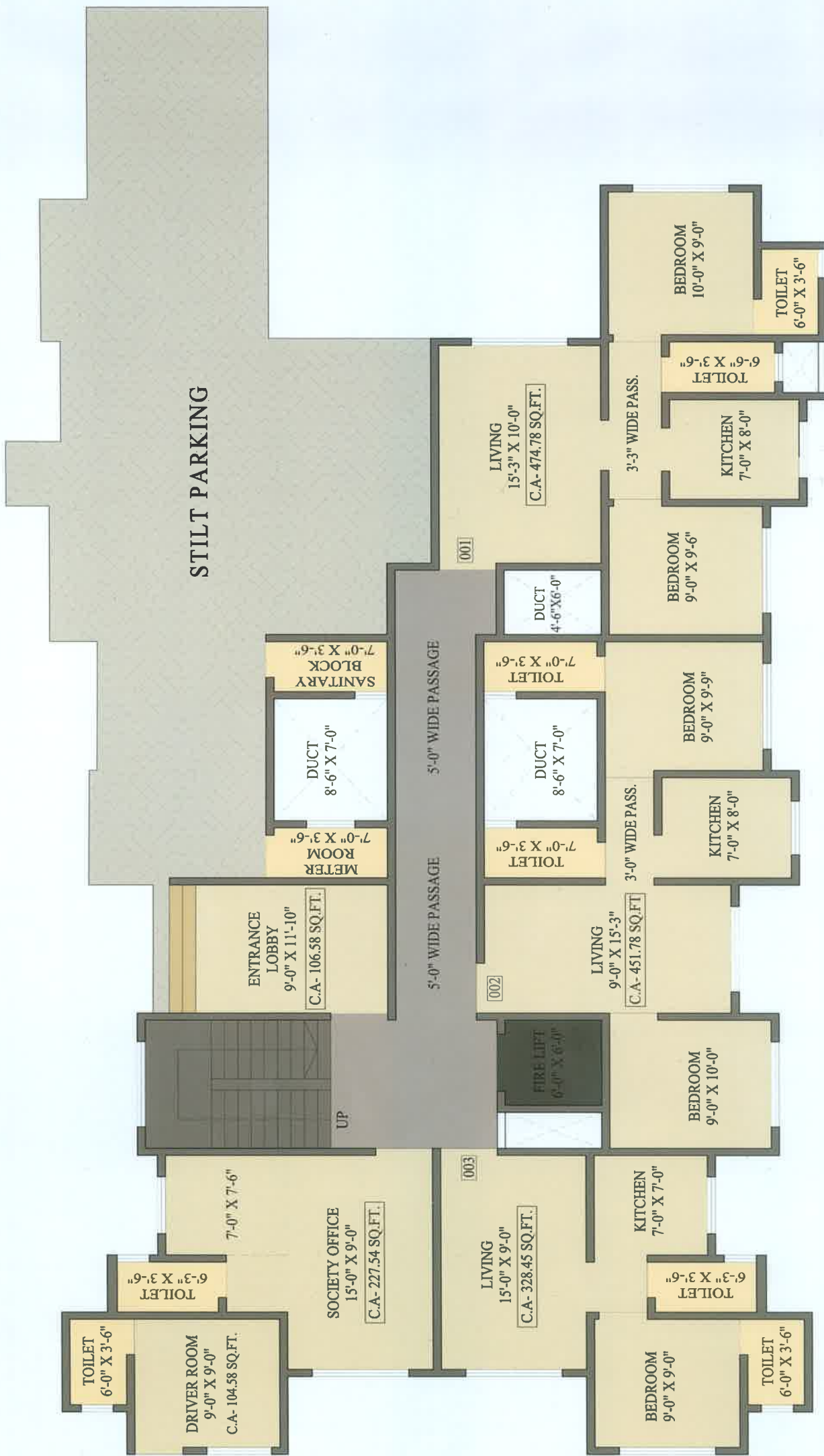
# Upcoming Project Building No. 2



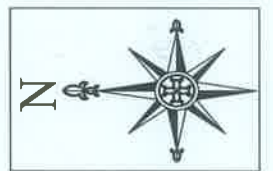
## Upcoming Project Building No. 2



# Upcoming Project Building No. 2



BUILDING NO.- 02 ( TYPE -B )  
GROUND FLOOR PLAN





# All You Need

*For Your Convenience*

## Internal Amenities

### LIVING & BEDROOM

- Vitrified Flooring
- Flower Bed with Designer Railing

### ELECTRICAL

- Concealed Copper Wiring with Modular Switches
- Sufficient Electric Points
- Safety Features like MCB

### KITCHEN

- Fine Finish Granite Top Platform with SS Sink.
- Vitrified Flooring
- Designer Tiles on wall upto Beam Level above platform
- Modular Kitchen Trolley

### DOORS

- Wooden Doors with Quality Fittings
- Wooden Door Frame
- Bakelite Doors for Bathroom/TOI

### 1BHK with Master Bedrooms WINDOWS

- Good Quality Anodised sliding windows
- Granite Sills

### PAINTING

- Superior Quality Paint for External Walls
- Superior Quality Paint on internal walls
- China chip on Terrace

### WASHROOM

- Designer Bathrooms tiles
- Anti Skid Tile Flooring
- Concealed Plumbing
- Premium C.P. Fittings
- Branded Sanitary Ware
- Overhead Water Tank with Loft

2 BHK

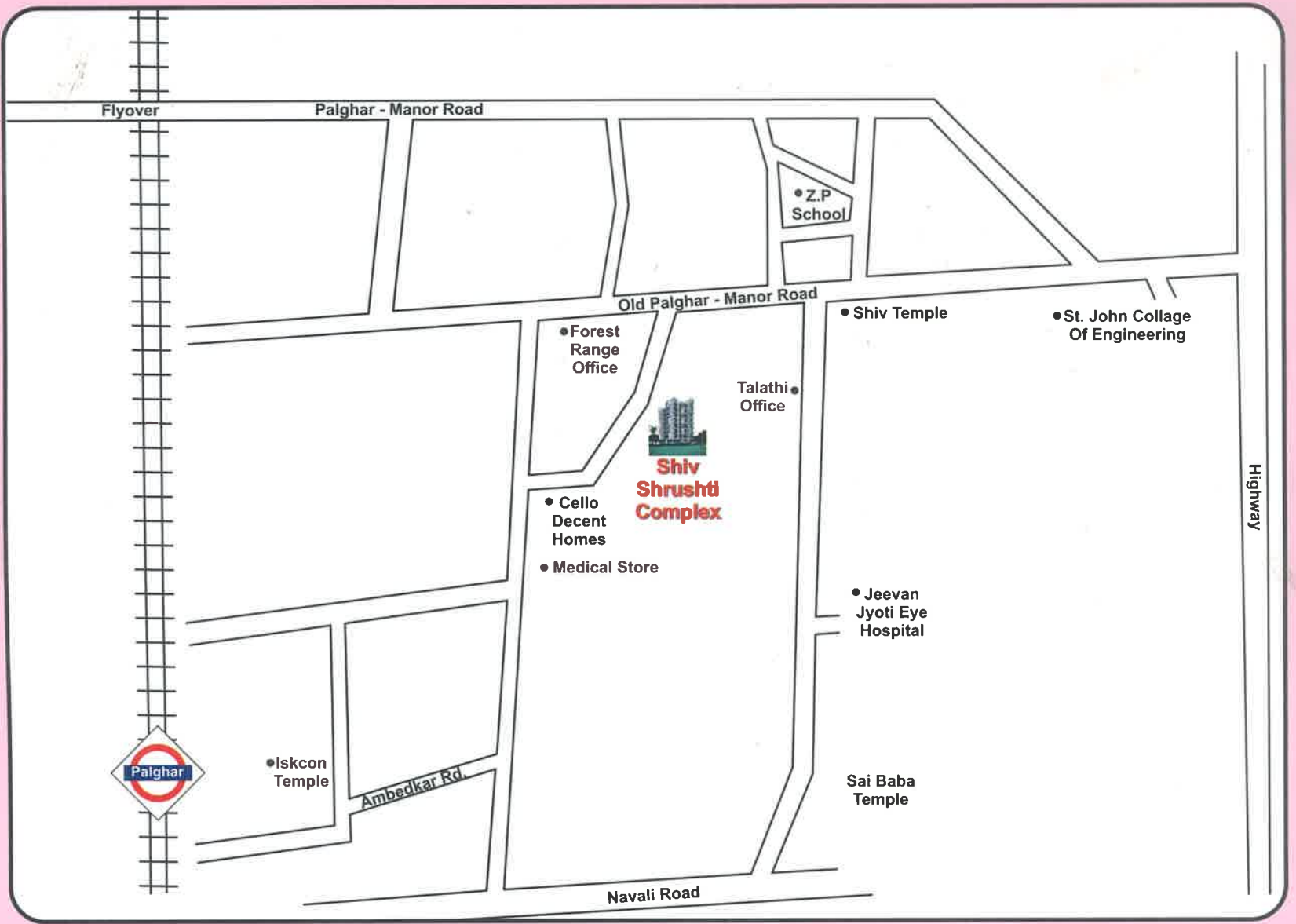


1 BHK



## Paramount Enclave Phase - II Ready Possession





Developed By



## Kavita Builder & Developers

ARCHITECT  
NISHANT P. PATIL

RCC CONSULTANT  
YOGESH VAJA

LEGAL ADVISOR  
SUNIL D PAL

Reg. Office No. 17, First Floor, Sunshine Height, Near Railway Station, Nallasoara (E)  
Site : Survery No.15, Near Cello Decent Homes, Station Road, Village Vevoor, Palghar East - 401404

 [kavitarealty56789@gmail.com](mailto:kavitarealty56789@gmail.com)



The project has been registered with  
MaharERA registration number - **P99000051314** is Available  
the website - [www.maharera.mahaonline.gov.in](http://www.maharera.mahaonline.gov.in) under registered projects.



 **99759 38370 / 76666 66377**

Note : This Brochure is purely conceptual and not a legal offering. The promoters/ architects reserve the right to add/delete/alter any detail/specification/ elevation mentioned herein  
The Brochure is indicative of how the furniture can be arranged in the flat. No furniture of any nature is to be supplied to the purchaser by the developer.