





Project Features

Pride comes from future-proof features and fulfilling amenities.



Spacious Building Entrance



24x7 Security Guard



C.C.TV in All Common Area



Earthquake Resistant Structure



Loft Tanks to Ensure Water Supply



Well planned flats with proper ventilation



Water Proofing Treatment on Terrace



24 Hrs. Power Backup in all Common Area



Adequate Planned Parking Space For 2/4 Wheelers



Enjoy the Different of Views...



NIGHT VIEW



INTERNAL AMENITIES

LIVING ROOM

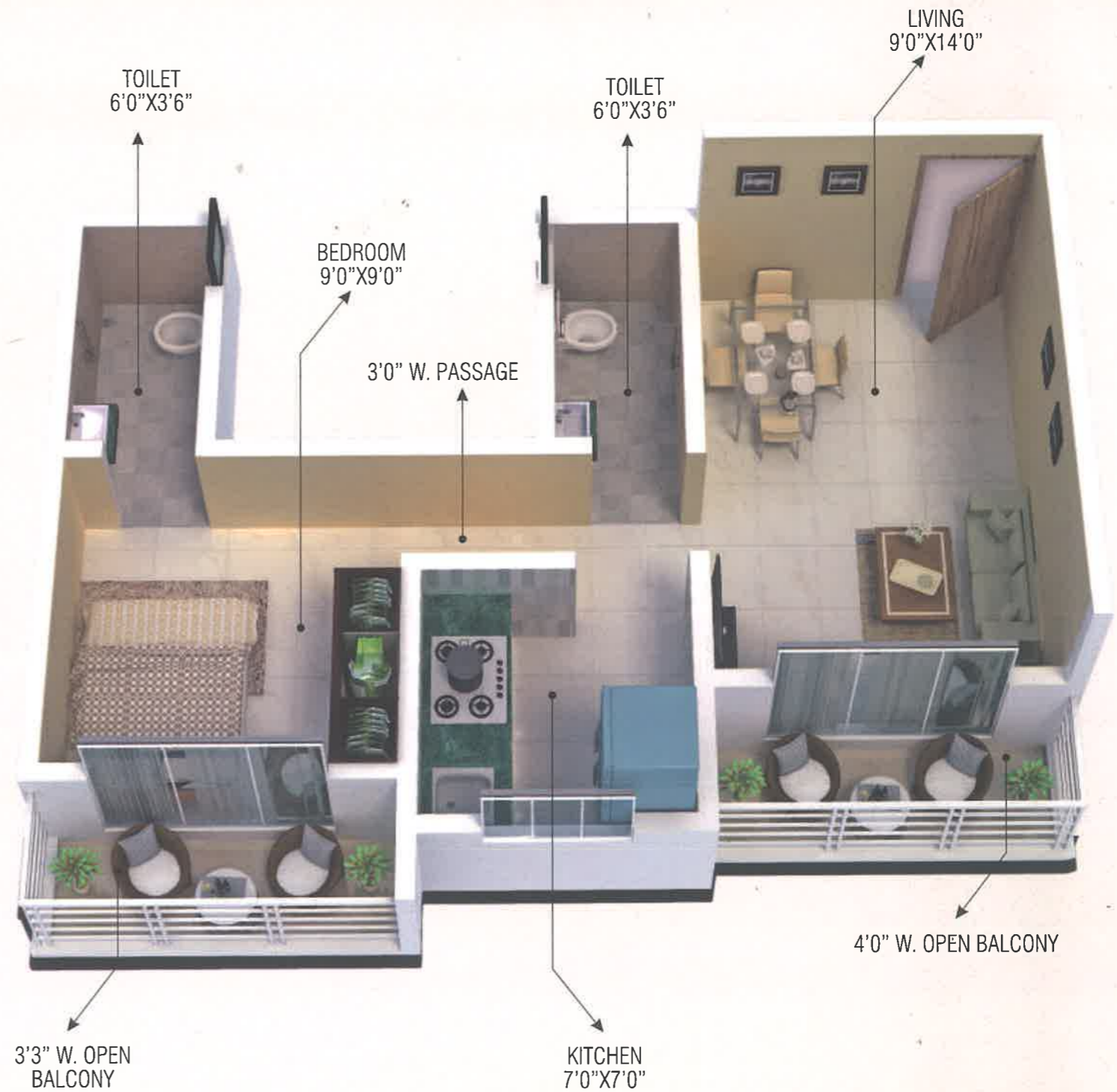
- Vitrified Tiles Flooring.
- Corner POP Fall Ceiling with 4 Spot Lights of 1w.
- Full Ht. Aluminium Windows with power coating.
- Designer Main Door.
- Provision For Safety Door.
- 2 Fans, 2 LED Lights 15w.
- Decorative Light in Center Position

BED ROOM(S)

- Vitrified Tiles Flooring.
- Full Ht. Aluminium Windows with Powder Coating.
- Painted Flush Door.

KITCHEN

- Modular Kitchen.
- Vitrified Tiles Flooring.
- Aluminium Window with Point Provision for Exhaust Fan.
- Ceramic Tiles Dado Above Platform.



ELECTRIFICATION

- Concealed Wiring.
- Branded Modular Switches.
- Invertor Provision.
- ELCB As A Safety Device.
- Geyser, Fridge & Washing Machine Point Provision.
- TV & Telephone Point Provision.

BATHROOM & PLUMBING

- Ceramic Tiles Flooring.
- Ceramic Tiles Dado up to Door Height.
- Loft Tank Provision.
- Branded Sanitary Ware & Fixtures.
- Concealed Plumbing.
- Washing Machine Provision In Dry Balcony.

